



Exposition Construction Authority

707 Wilshire Boulevard, 34th Floor
Los Angeles, CA 90017
213.243.5500
BuildExpo.org

FOR IMMEDIATE RELEASE
December 13, 2013

CONTACT: Gabriela G. Collins
Exposition Construction Authority
213-243-5535
gcollins@exporail.net

EXPO PHASE 2 TRACK INSTALLATION UNDERWAY

With bridges and stations making great progress, the Expo Phase 2 project has moved into a new, exciting phase with the start of track installation. More than 30 miles of rail are being installed along the alignment between Culver City and Santa Monica by SRJV's subcontractor Herzog-Delta, a team with over 100 years combined experience in the railroading industry.

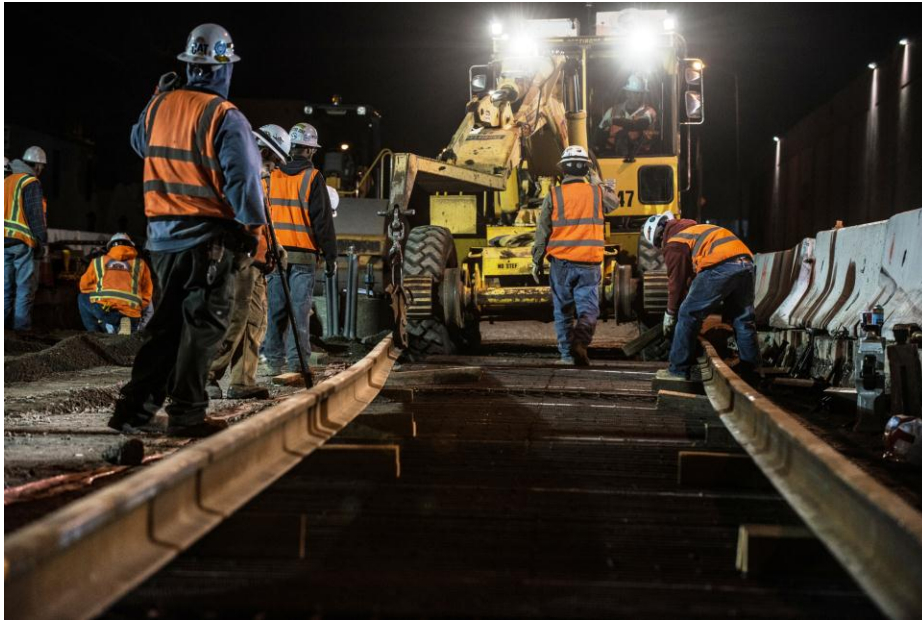
The first Expo Line track crossings were installed at Westwood Boulevard and Overland Avenue in West Los Angeles last month. Santa Monica saw the first track installed earlier this week at 11th Street, where an extended street closure will continue through Sunday, December 15 at 11:00 p.m. Approximately a half mile of rail has been installed so far, and additional track crossings will be scheduled starting January 2014.

Rick Thorpe, CEO of the Exposition Construction Authority noted, "Track installation is a tangible sign of major progress on the project. We're excited to move into this new phase and remain focused on completing construction in 2015."

For additional information regarding construction activities, please contact the Expo hotline at (213) 922-EXPO (3976) or visit www.buildexpo.org.

Service on Phase 1 of the Expo Line began in Spring 2012. Construction on Phase 2 is expected to be complete in 2015. The Expo Line will bring greater mobility to the region by connecting West Los Angeles to the region's existing rail network. These communities are traditionally underserved by public transportation and among the most traffic-congested in the nation.

###



All Photos: Crews installing track at 11th Street and Colorado Avenue in Santa Monica

