



Expo Line Community Meeting
Maintenance Facility Design Update
September 6, 2011

Maintenance Facility Design Update

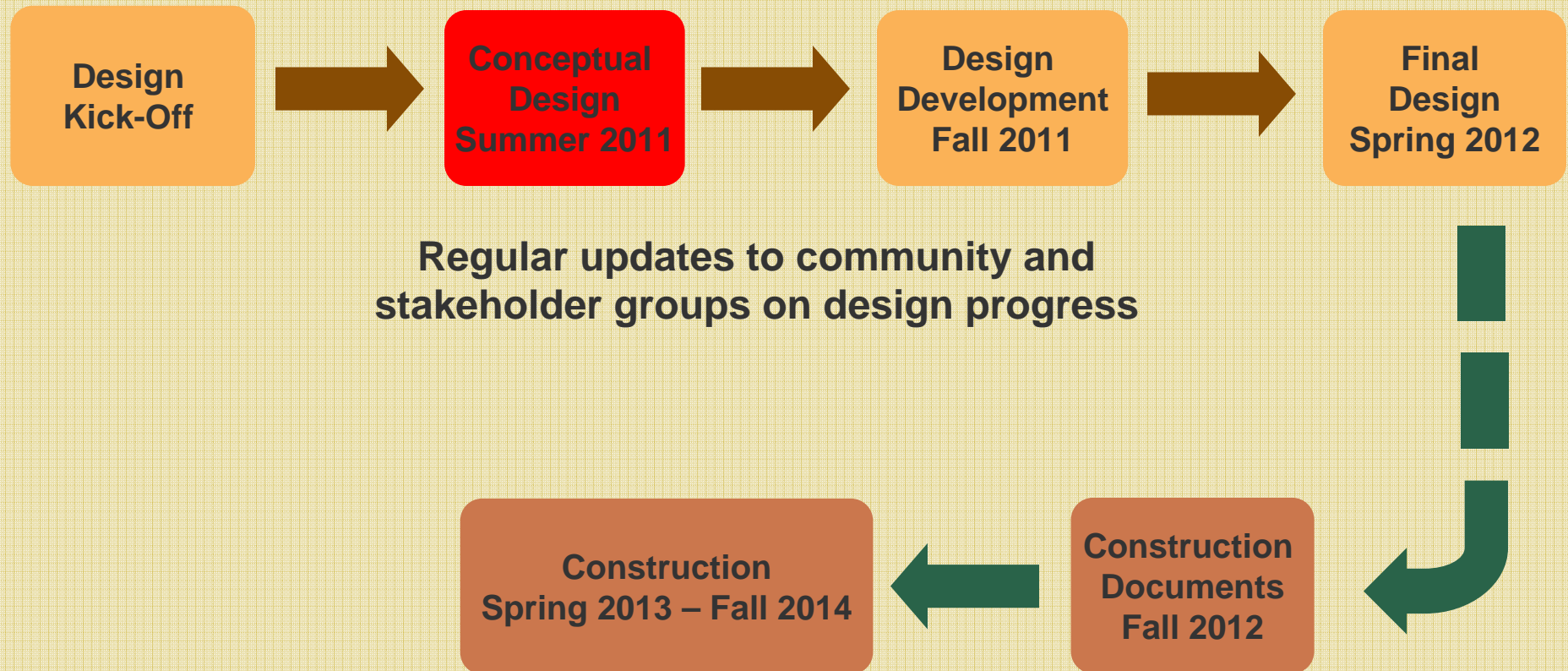
- Meeting Purpose and Format
- Update from the Design Team
- Review of Proposed Site Scenarios
- Feedback from the Community
- Next Steps



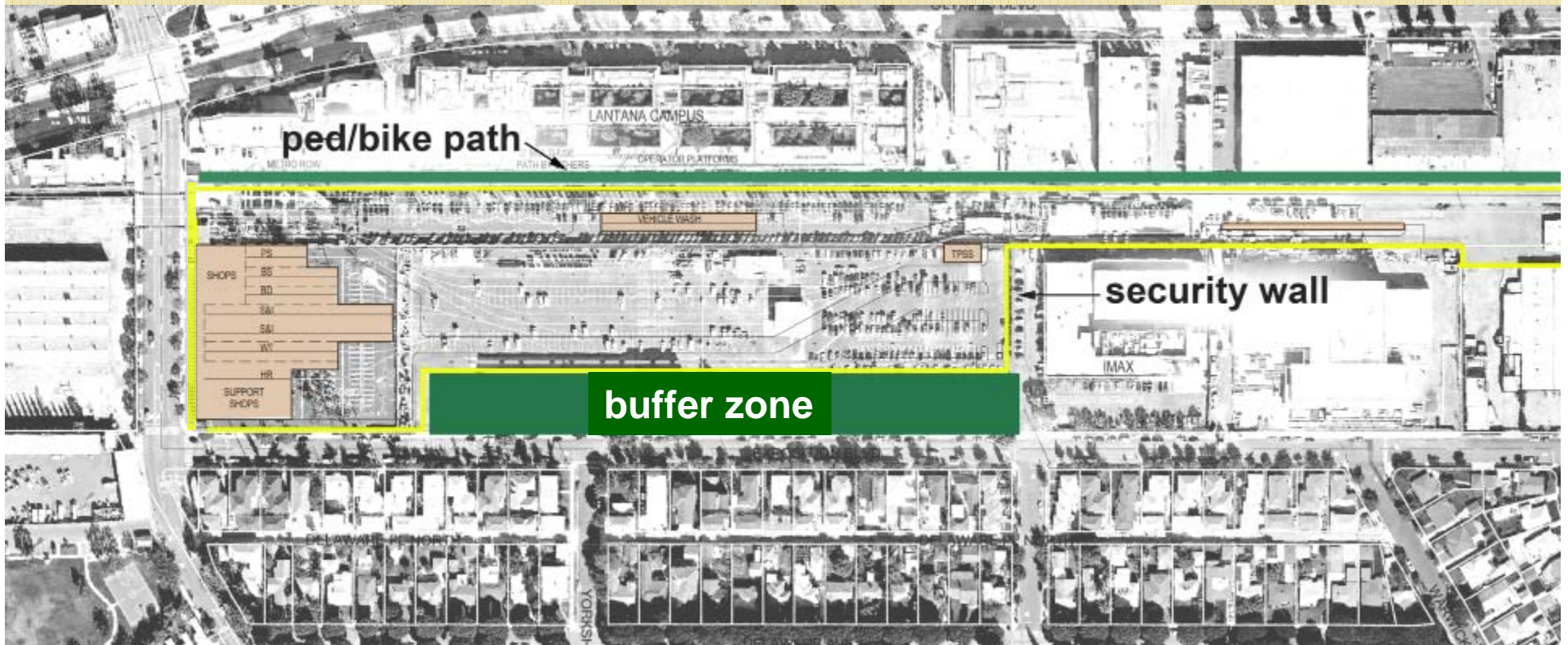
Meeting Purpose and Goals

- Report back on input received at Design Kick-Off meeting
- Explain development of proposed site scenarios
- Review proposed site scenarios and how they address input
- Obtain feedback and identify preferred site scenario

Overview of Final Design Process and Timeline



FEIR Approved Site Plan



Input Received at Design Kick-Off Meeting

- Sound
- Lighting
- Traffic and Circulation
- View
- Neighborhood Integration
- Landscaping



Development of Proposed Scenarios

1. Community Meeting #1
2. Programming and Interviews
3. Sustainability Charrette
4. Master Planning & Design Charrettes
5. Development and Layout of Two Preferred Concepts
6. Community Input

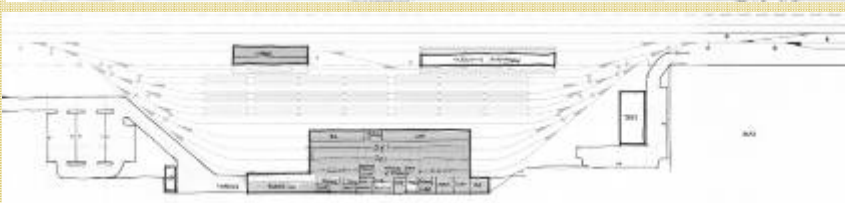
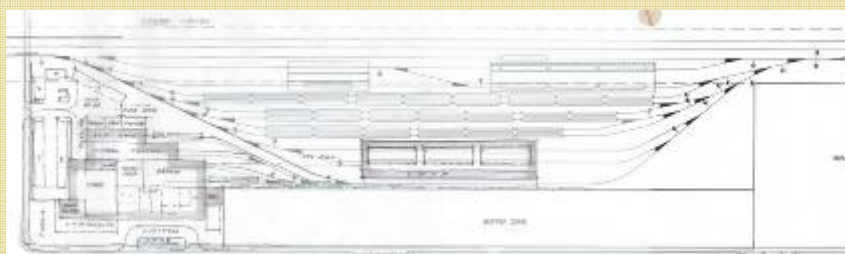
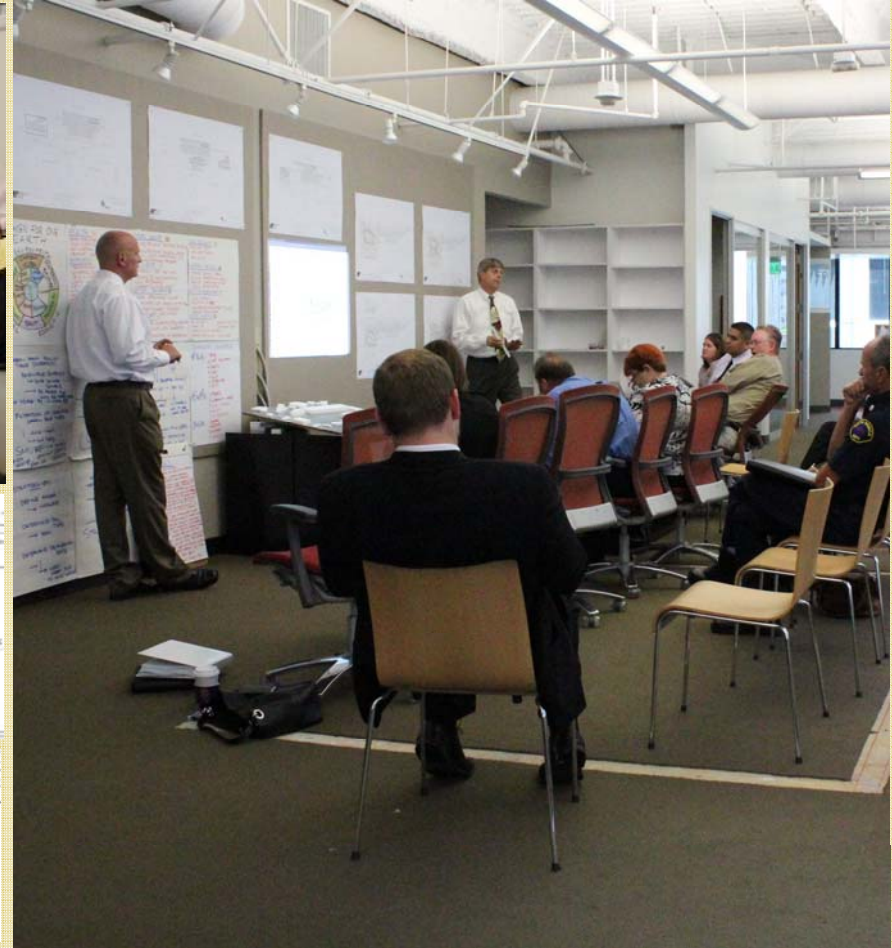
Expo Line Transit Project

Charrette

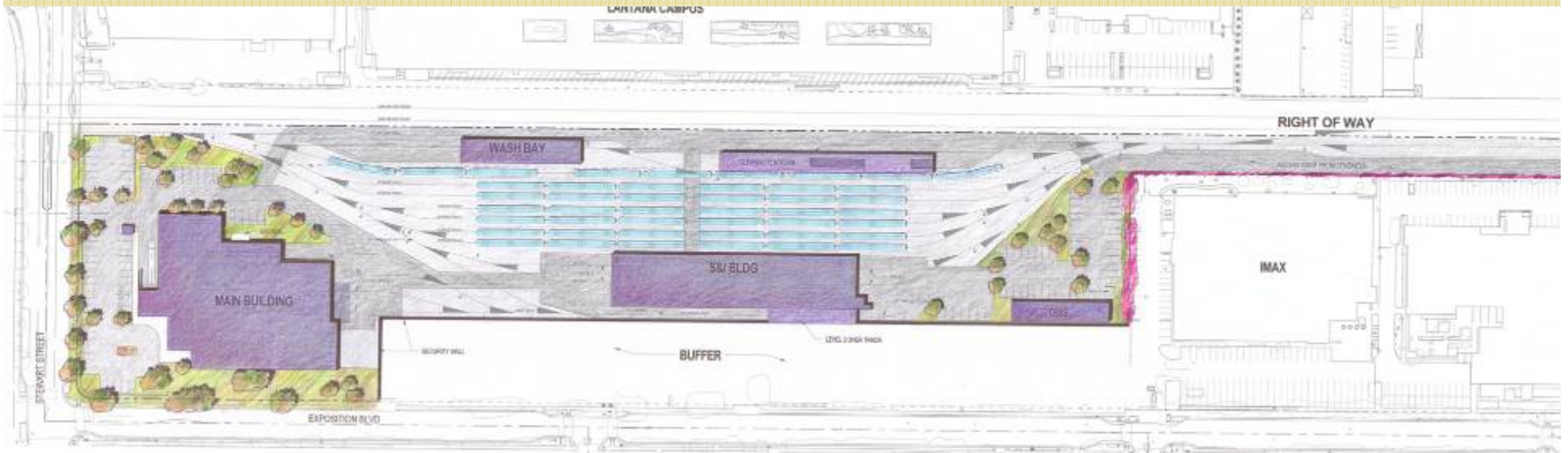


Expo Line Transit Project

Charrette

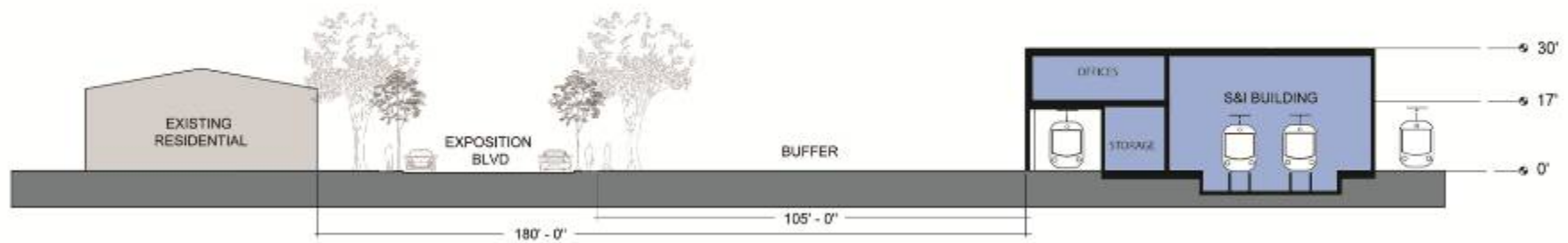


Site Scenario 1



Expo Line Transit Project

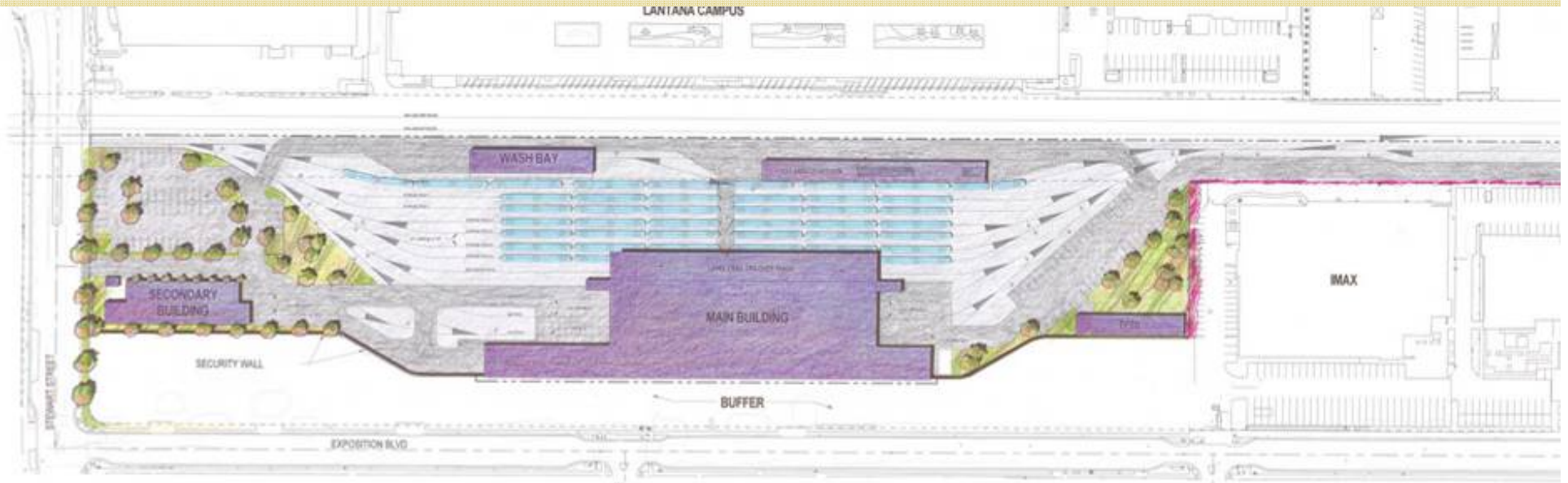
Site Scenario 1



Benefits of Site Scenario 1

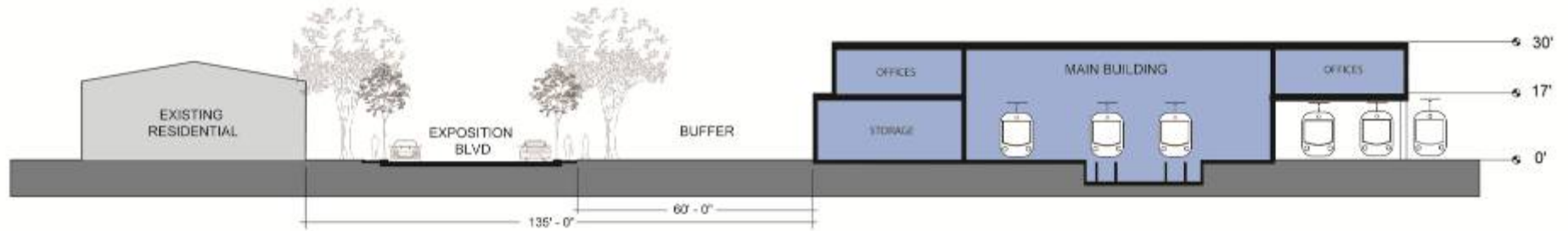
- Buffer in original configuration
- Main building 40' setback from Exposition
- Wall & buildings block sound from yard
- No loop tracks (mitigates wheel squeal)
- Reduces train vehicle movements
- Yard is blocked from view by buildings
- Buildings contain sound from maintenance activities
- Vehicle access from Stewart/Centinela. NOT Exposition
- Light spill-over shielded from neighborhood
- Sustainable design – LEED Silver or better
- Establishes a “front door” to the facility at Stewart/Exposition Corner

Site Scenario 2



Expo Line Transit Project

Site Scenario 2



Benefits of Site Scenario 2

- Continuous buffer along Exposition
- Wall & buildings block sound from yard
- No loop tracks (mitigates wheel squeal)
- Fewest train vehicle movements
- Greatest portion of yard is blocked from view by buildings
- Buildings contain sound from maintenance activities
- Vehicle access from Stewart/Centinela. NOT Exposition
- Light spill-over shielded from neighborhood
- Sustainable design – LEED Silver or better
- No trains between wall and building
- Corner of Stewart/Exposition is buffer/open space.

Feedback from the Community

- Questions and Answers
- Indication of Preferred Site Scenario
- Meeting attendees may email gsilva@exporail.net with scenario preference by 9/13.



Next Steps in the Design Process

- Begin design development on selected site scenario
- Provide regular updates to stakeholder groups throughout the process
- Host community workshops at key milestones to update on design progress



Expo Line Community Meeting
Maintenance Facility Design Update
September 6, 2011